



Envisioning Mobility in Green Digital Society

TOYOTA MOTOR CORPORATION
Ryokichi Onishi



Radio Systems in Cars

Communication

Beacon

2.5GHz, 350THz
(850nm)

Bluetooth
Wi-Fi

2.4GHz

Telematics
Service

Sub 6GHz

GPS

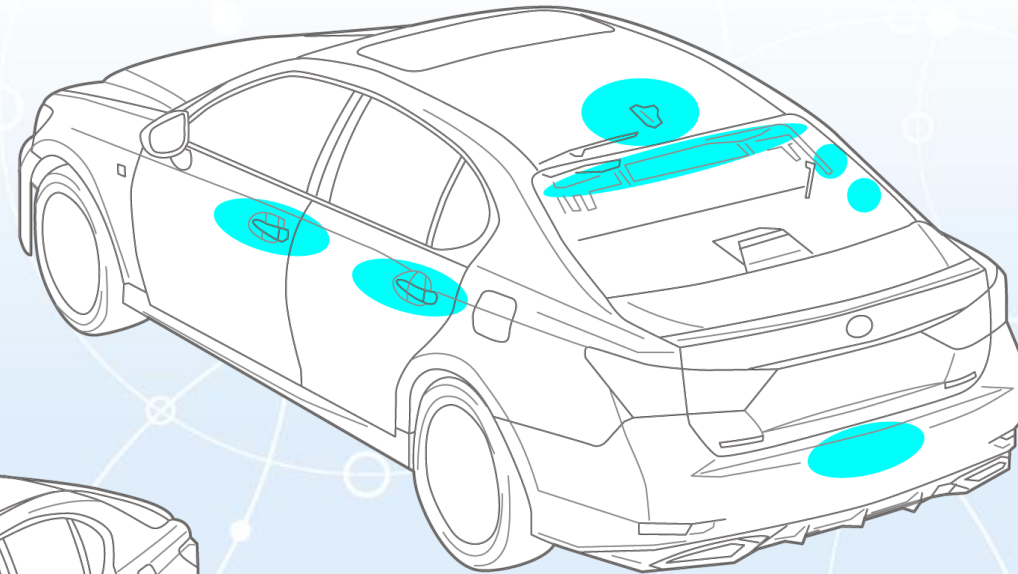
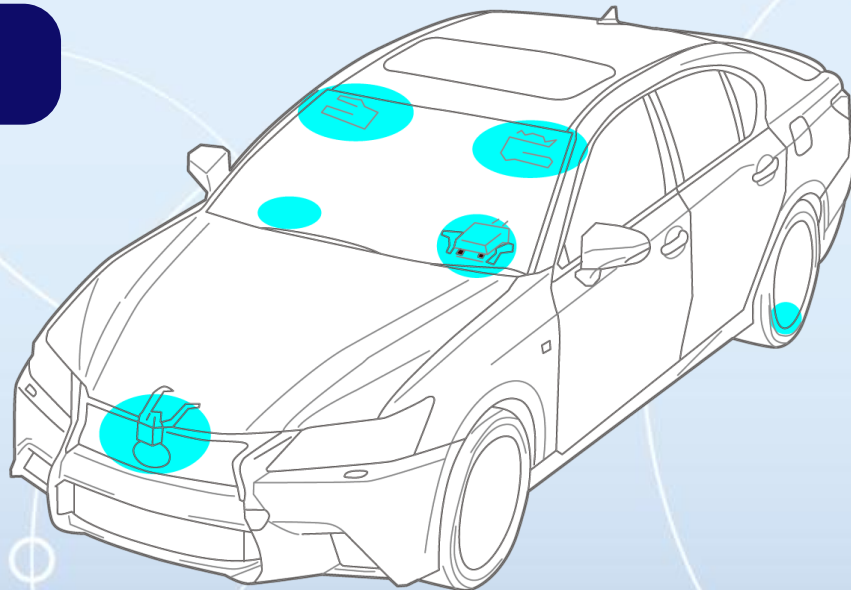
1.5GHz

ETC

5.8GHz

ITS

760MHz



Broadcast

Satellite
Radio

2.3GHz

DAB/DMB

174~240GHz,
1.4GHz

TV

470~770MHz

AM
FM/VICS

522~1629KHz
76~90MHz

Control

Smart Entry
Keyless Entry

312MHz

Garage
Opener

315MHz

Immobilizer

134.2KHz

Tire Pressure
Sensor

315MHz

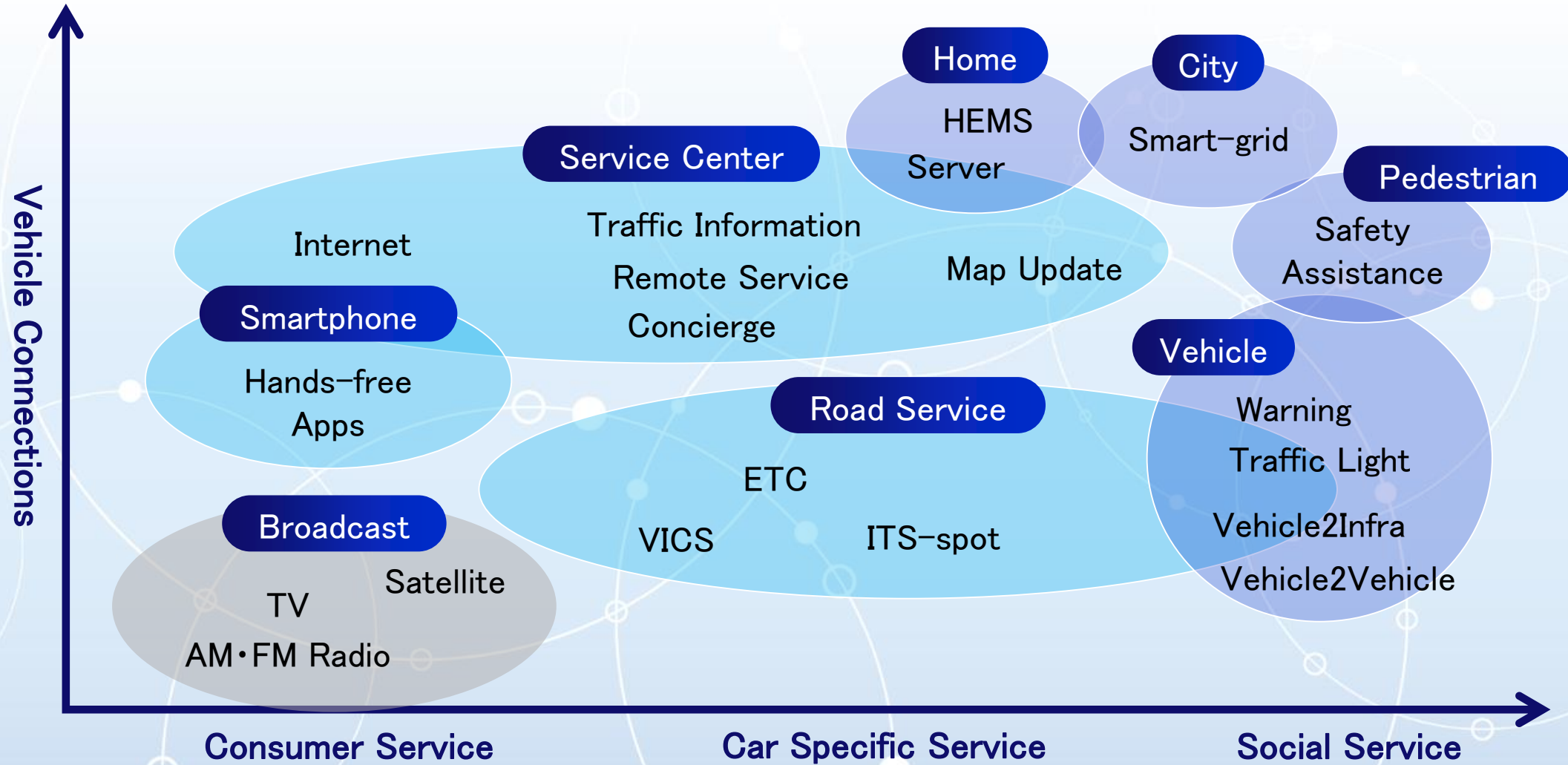
Intruder
Detection

24.15MHz

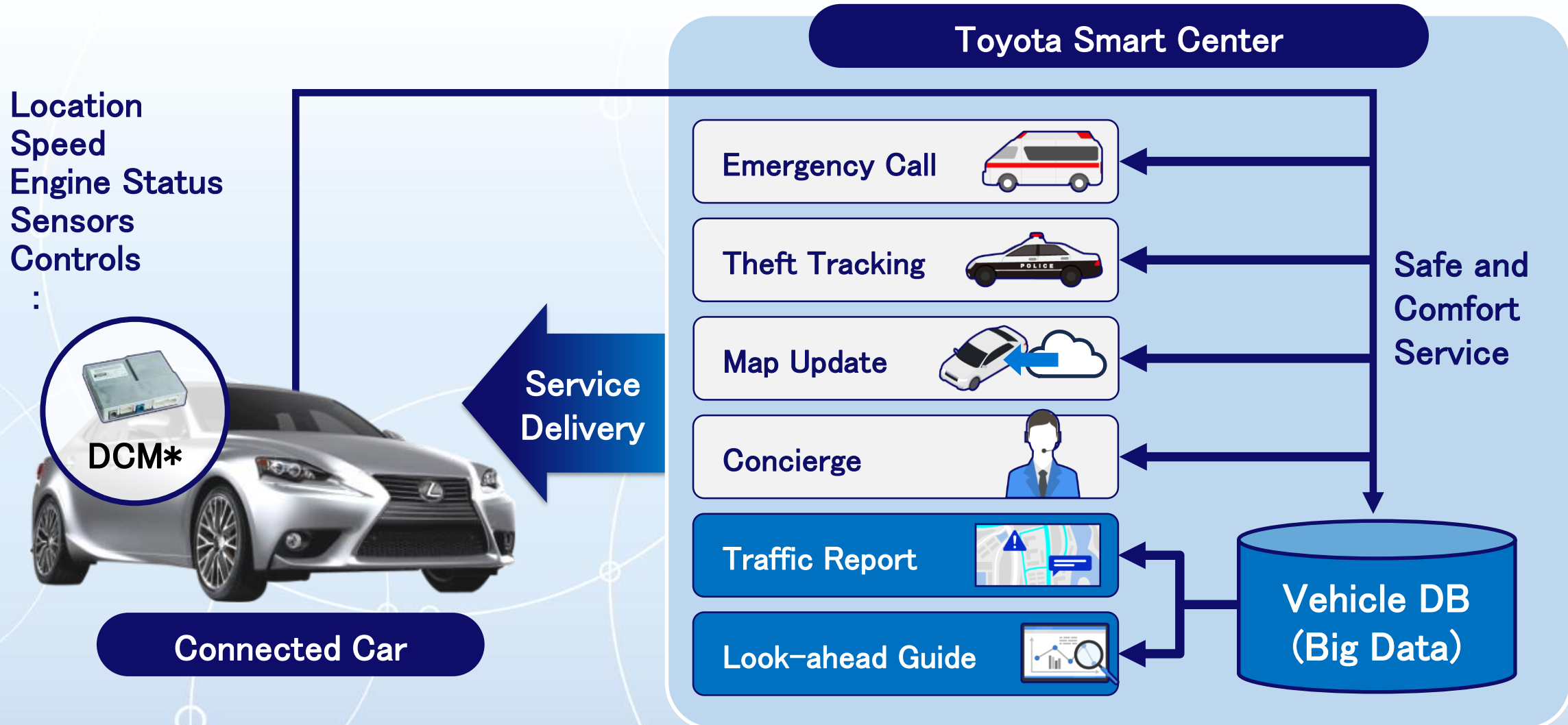
Radar

76~77GHz

Car-to-X Connections

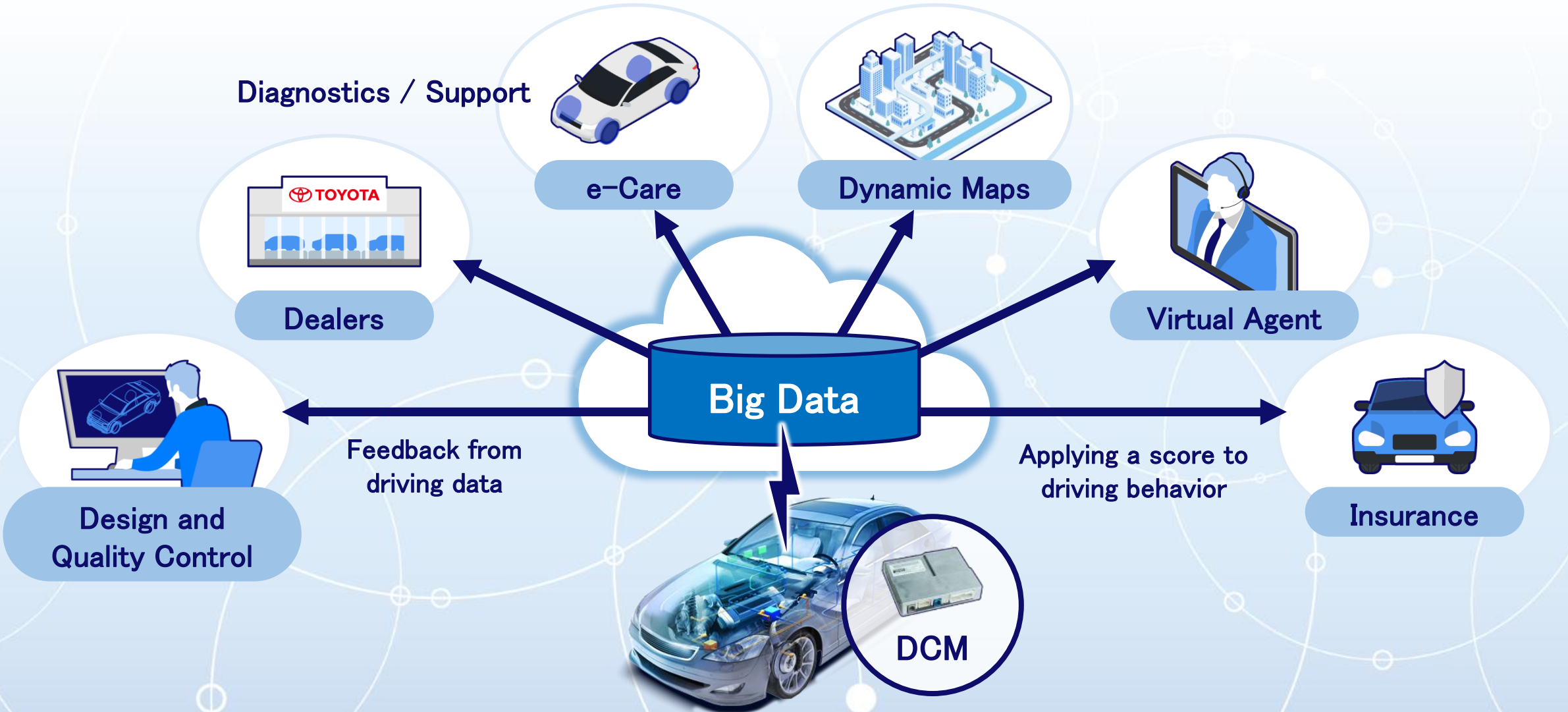


Telematics Services



*DCM: Digital Communication Module

Automotive Big Data



Global Communications Platform

Toyota Smart Center

Global communications platform

Integrated management and monitoring of communications networks



Carrier



Country X

Carrier



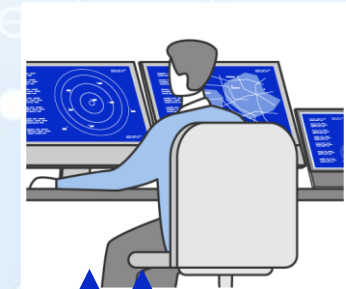
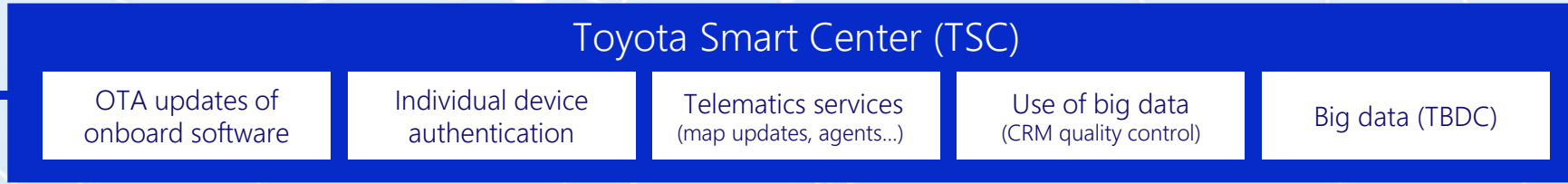
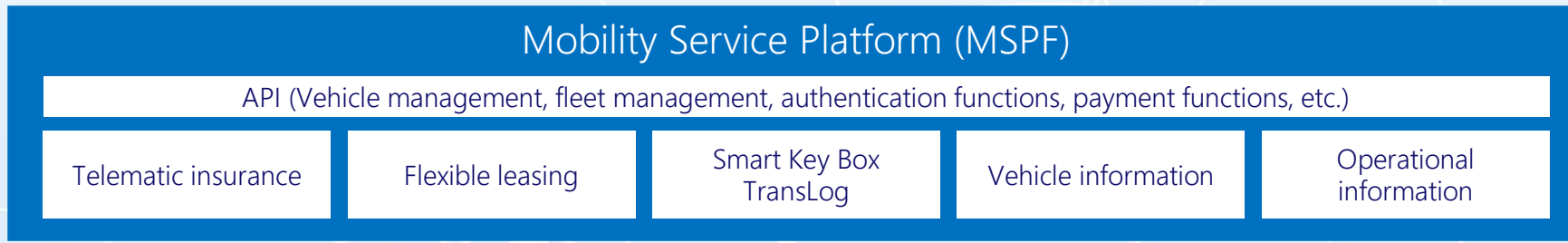
Country Y

Carrier



Country Z

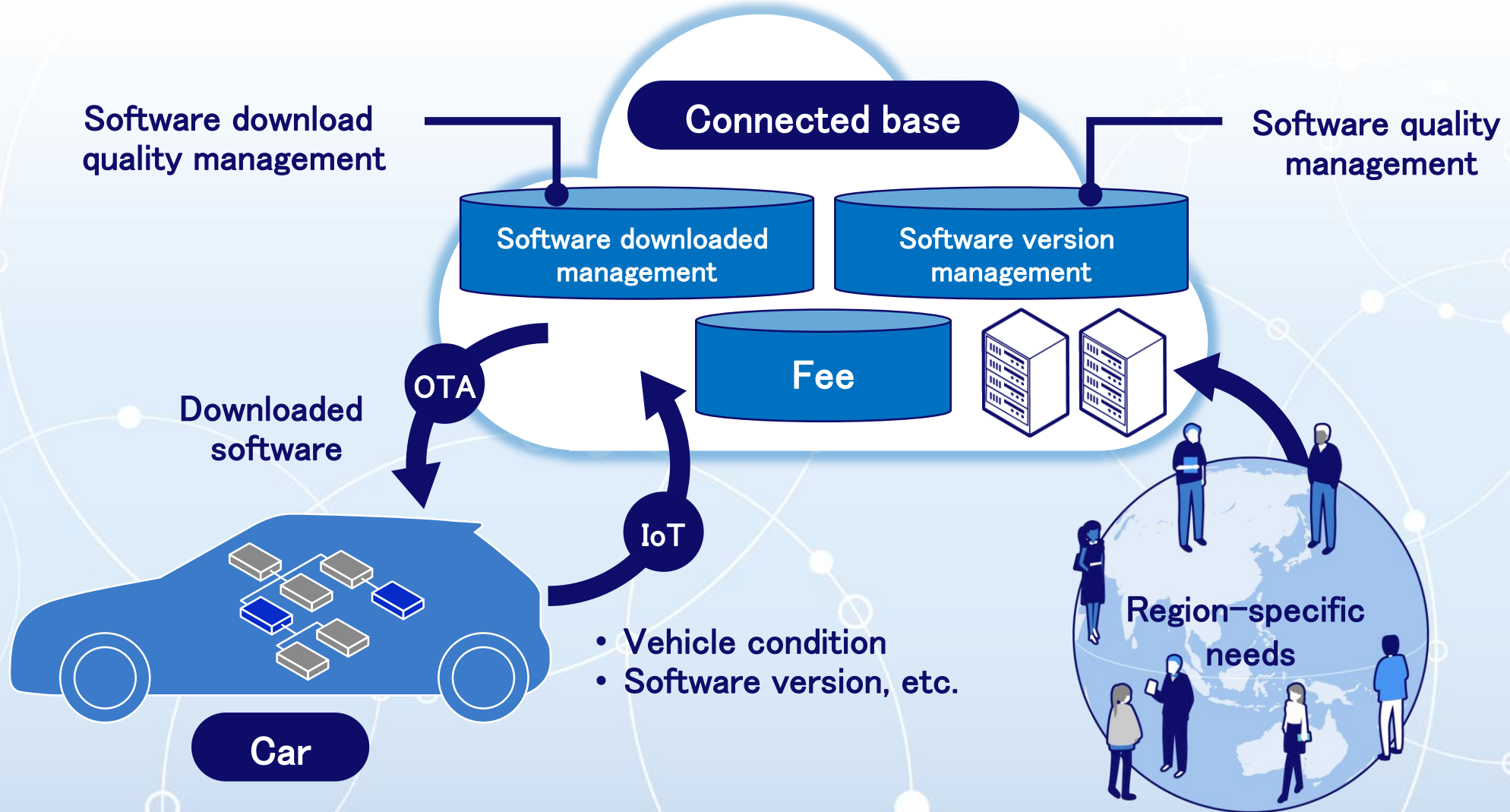
Mobility Service Platform



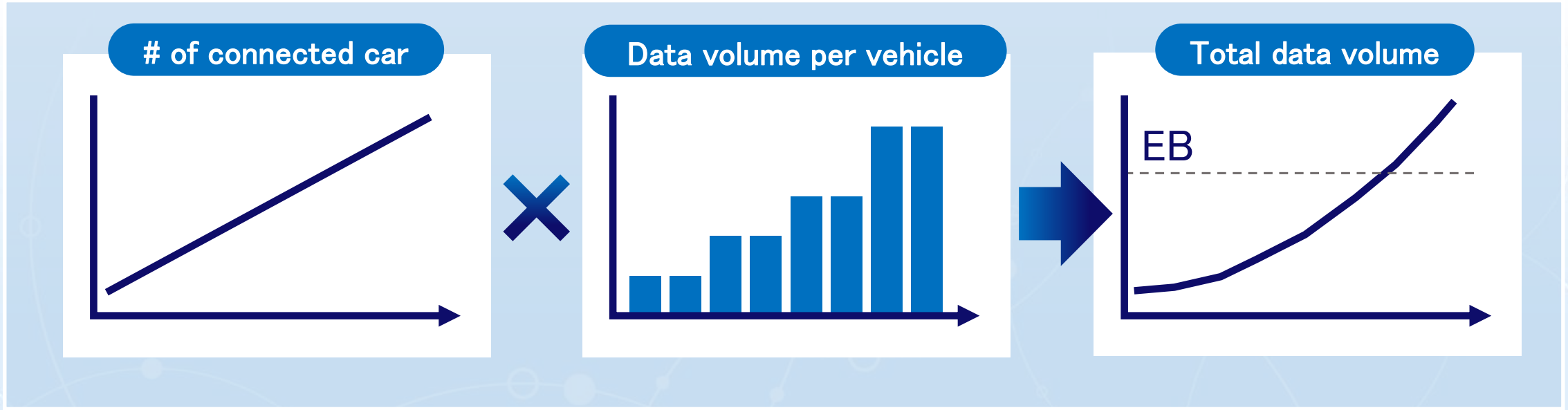
Operator-assisted services



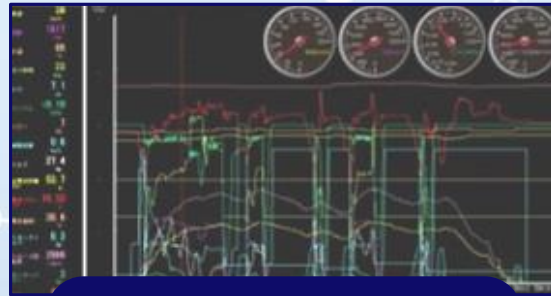
Vehicle IoT and OTA



Vehicle Data Volume



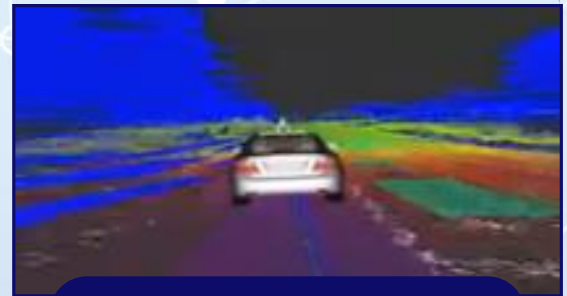
Mobility Condition



Vehicle Condition



High Definition Map



Object Detection

Alliance for All Connected

Jointly developing services and service platforms that ensure people's safety and security

Realize to enrich people's lives without being chained to the inside or outside of vehicles.



Jointly working to address social issues using big data

To solve social issues between urban and rural areas



Towns, Homes, People, and Cars are all connected

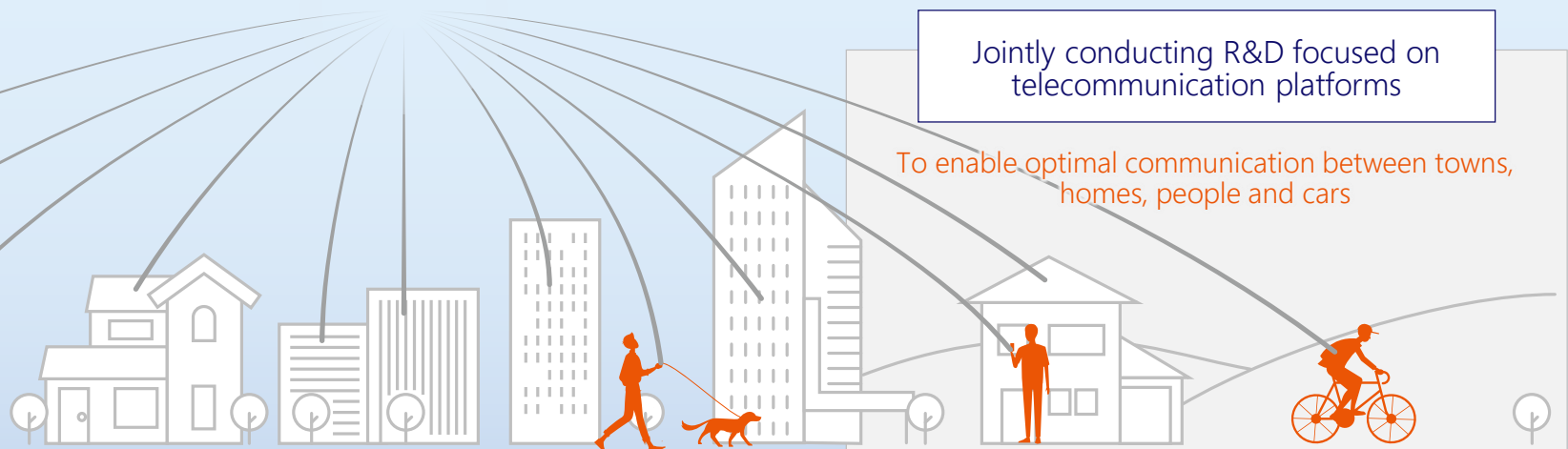
Jointly developing an operation and management system for next-generation connected cars

To enable sophisticated operations by integrated management of devices, networks, platforms and services

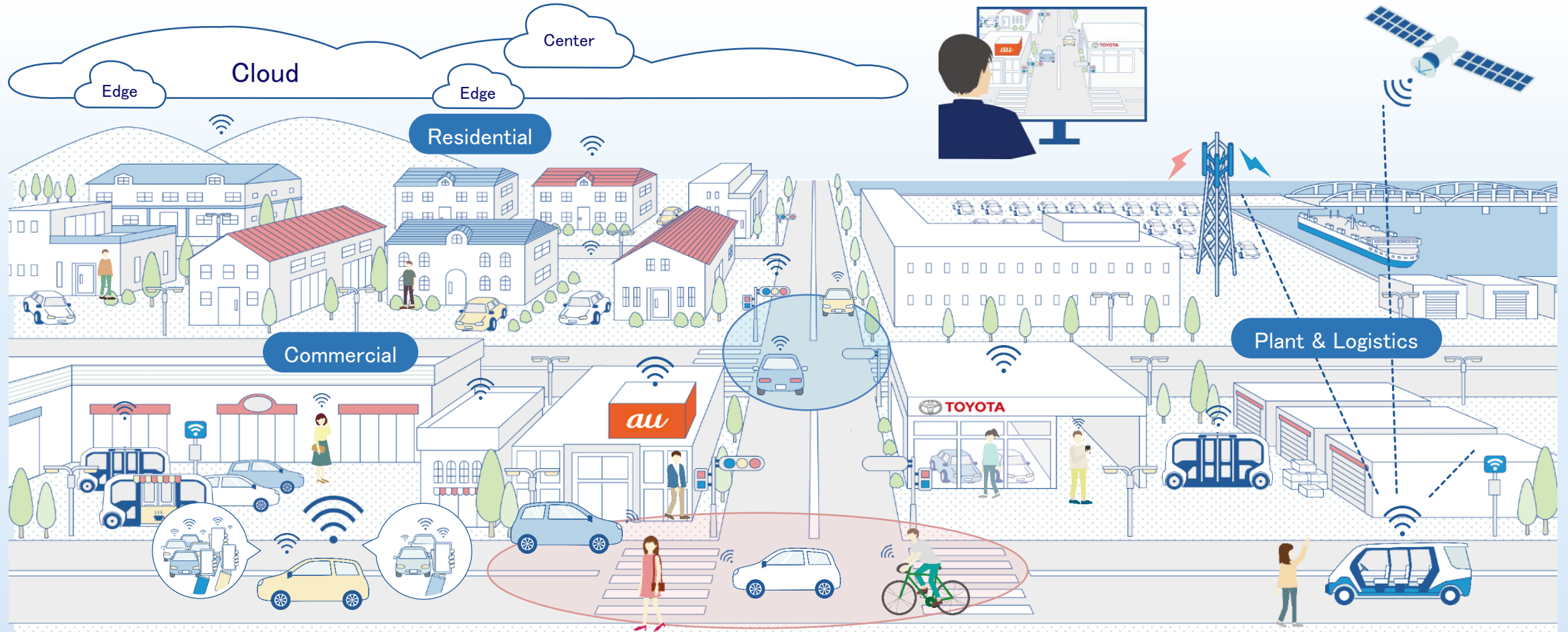


Jointly conducting R&D focused on telecommunication platforms

To enable optimal communication between towns, homes, people and cars



Beyond 5G: User-centricity



Optimized to Protect User Experience

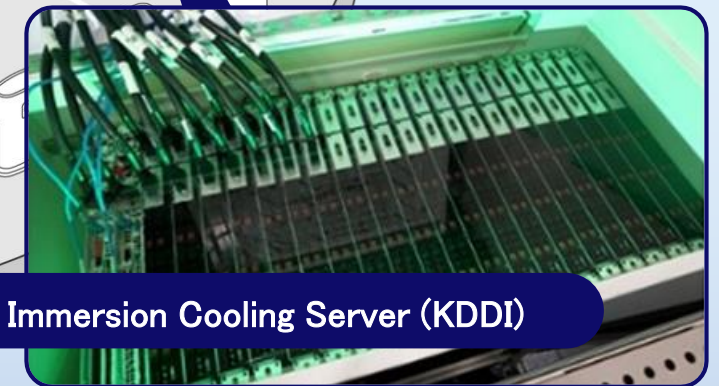
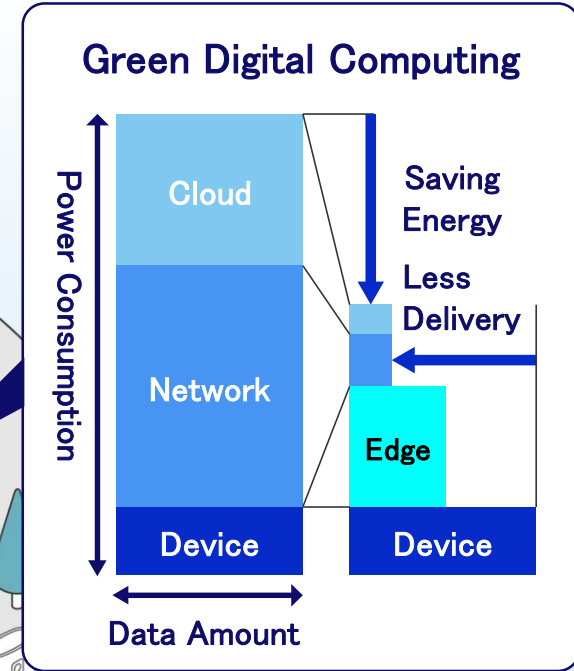
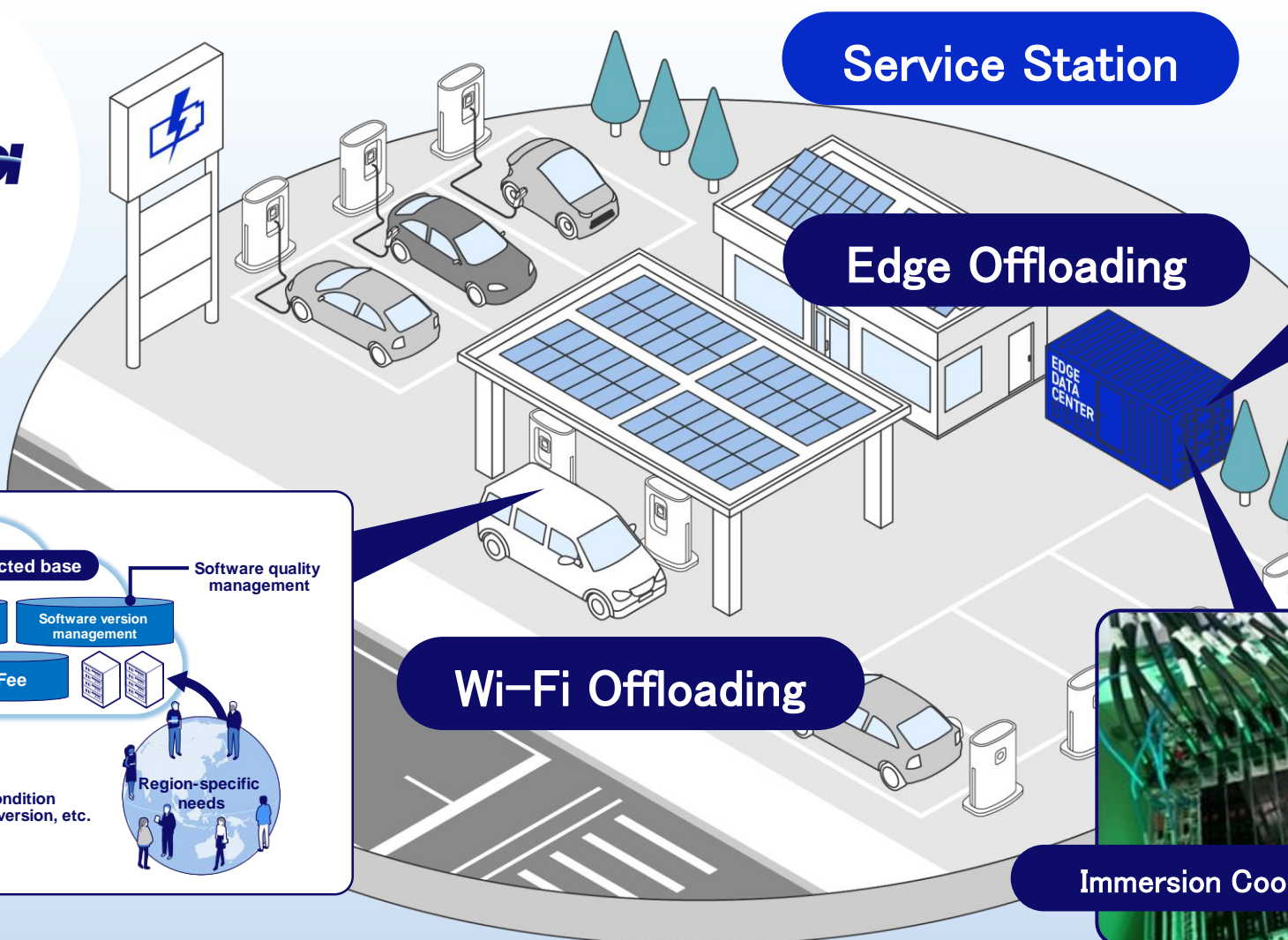
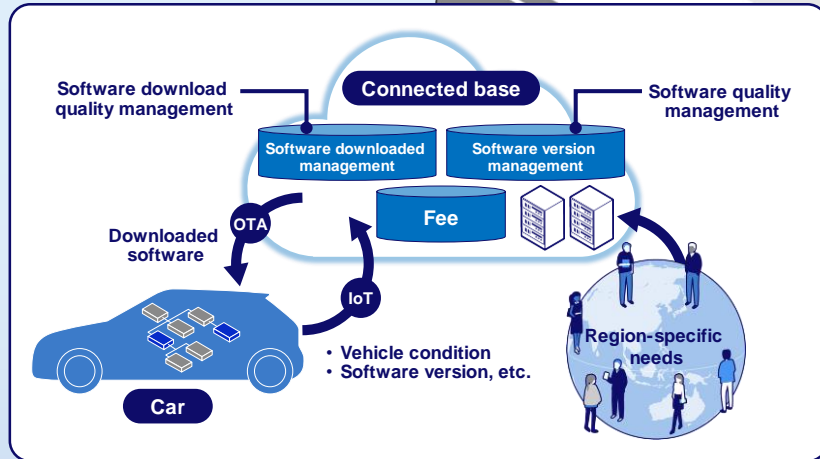
Expanding Local User Experience

Software-defined Diversity and Innovation

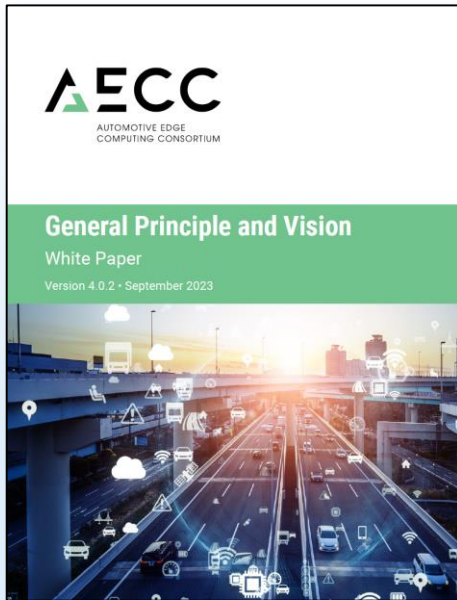
Green Digital Computing



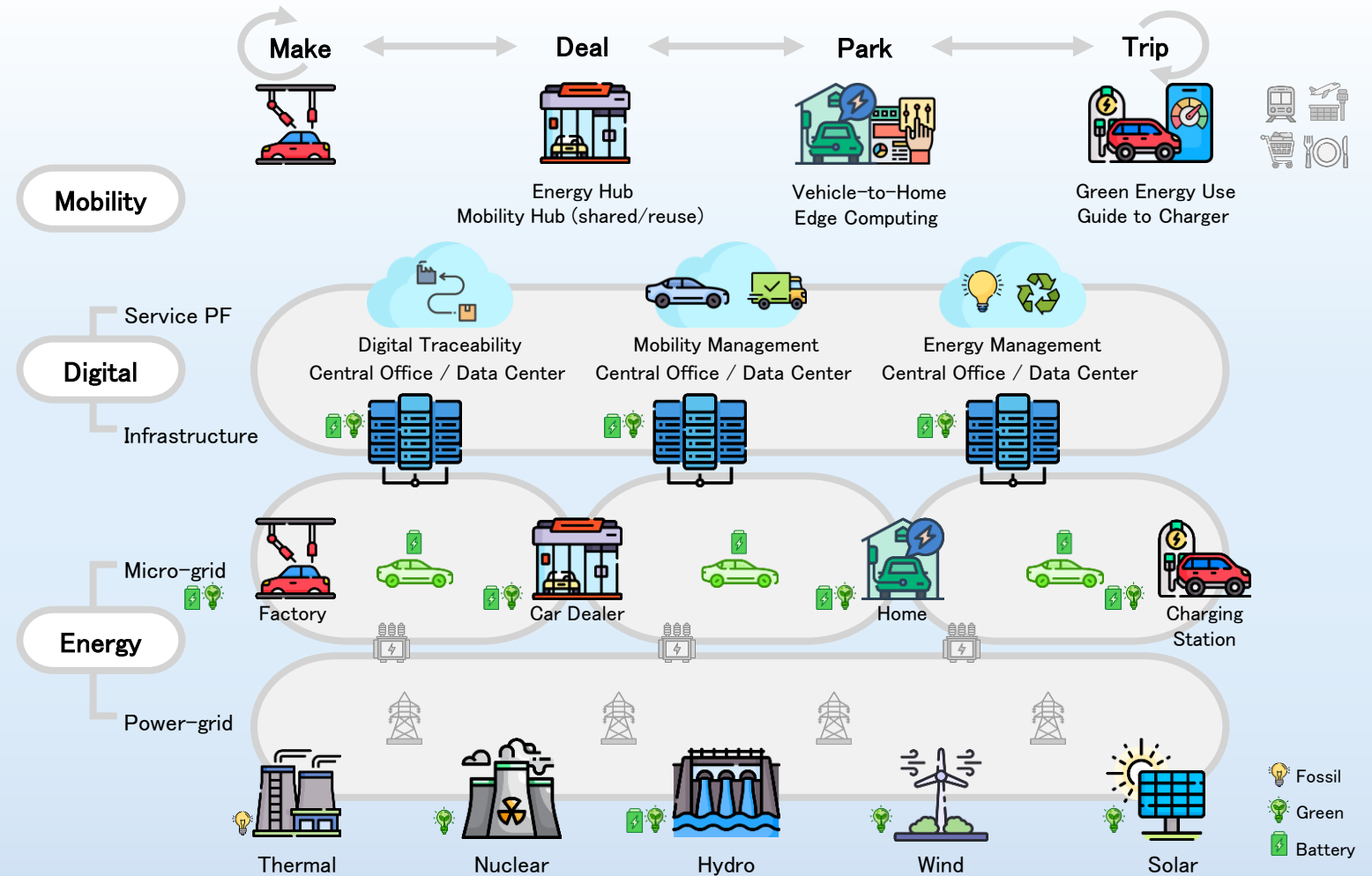
<https://aecc.org/>



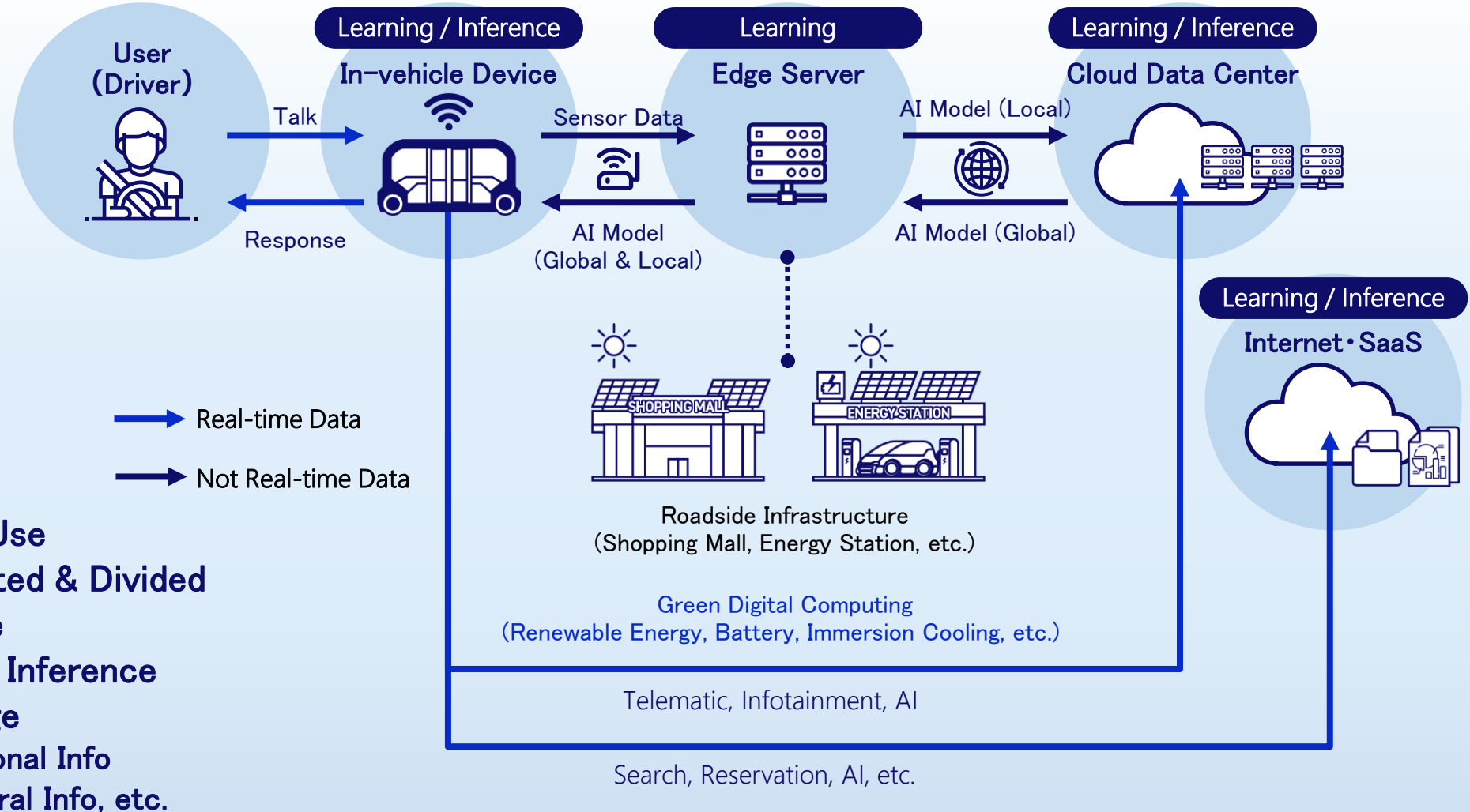
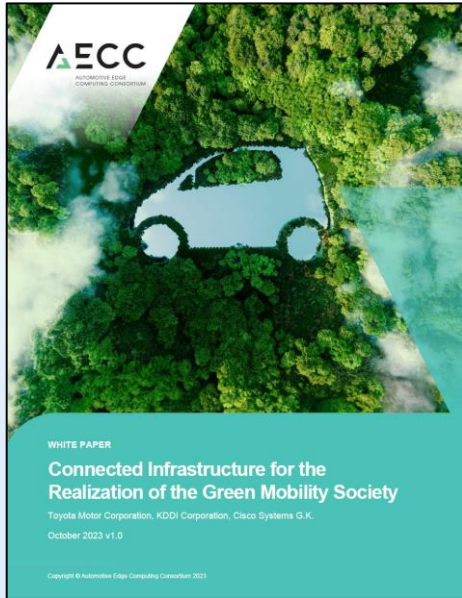
Mobility in Green Digital Society



- Digital optimization of mobility and energy
- Local rationality for economy and environment
- Cars balancing energy supply and demand



Generative AI for Mobility



- Digital Infra: Own & Use
- Digital Infra: Distributed & Divided
- AI Model: Own & Use
- AI Model: Learning & Inference
- Data Types & Storage
 - Manual, Personal Info
 - Local Info, General Info, etc.

Envisioning Mobility in Green Digital Society Together!

