

# Retail Innovations with Generative AI and IoT

## Future Solutions with Case Studies





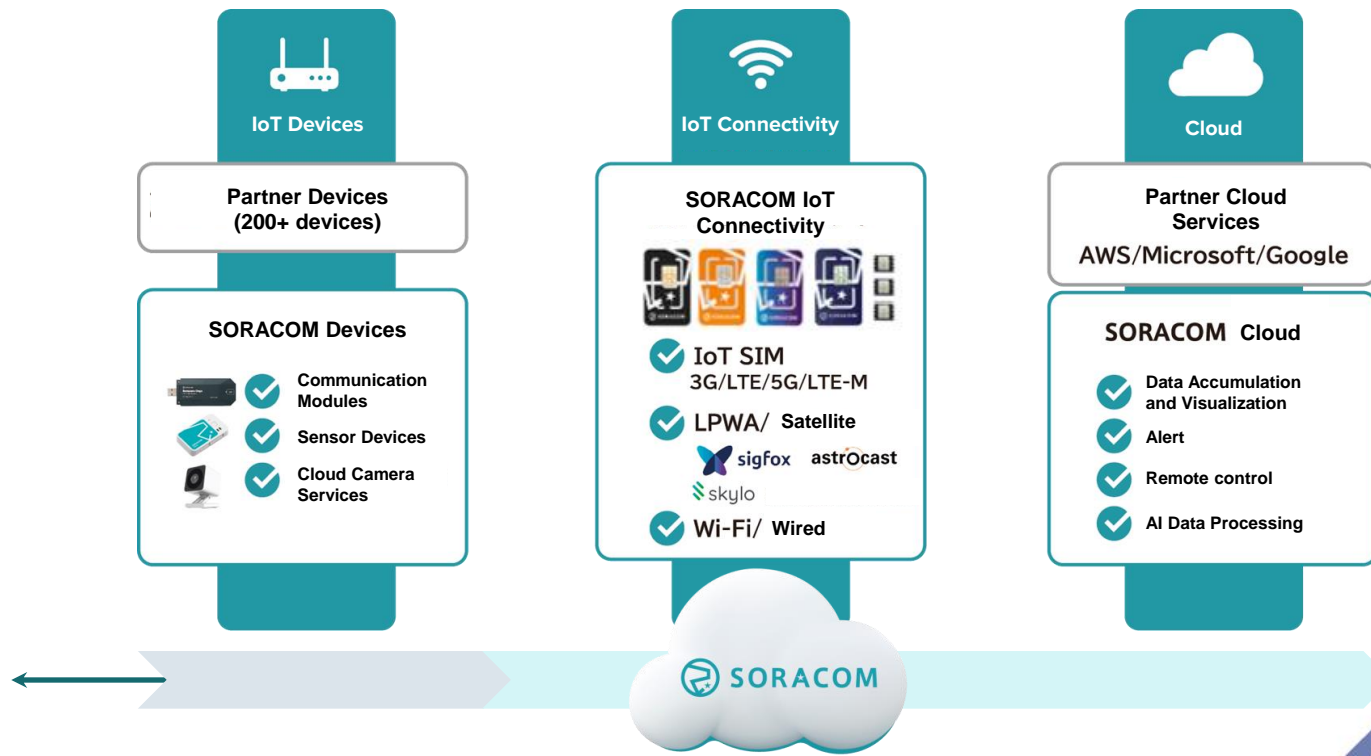
## SORACOM'S VISION

The best possible human future is **connected.**

## SORACOM'S MISSION

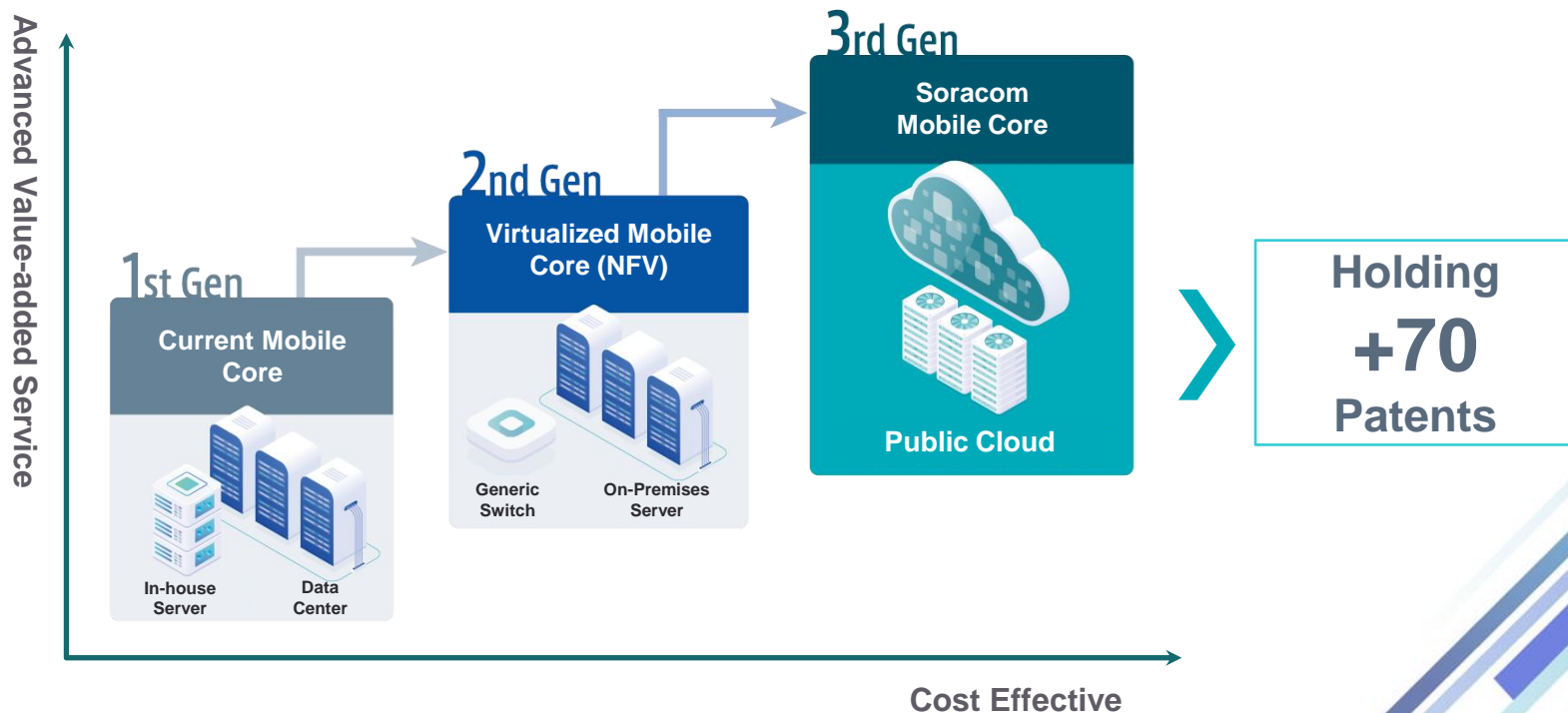
We are **the most customer centric company** that enables everyone to realize their passions and visions by **democratizing IoT technology, and accelerates innovations.**

## A global platform that accelerates IoT product development with a focus on data communications for IoT



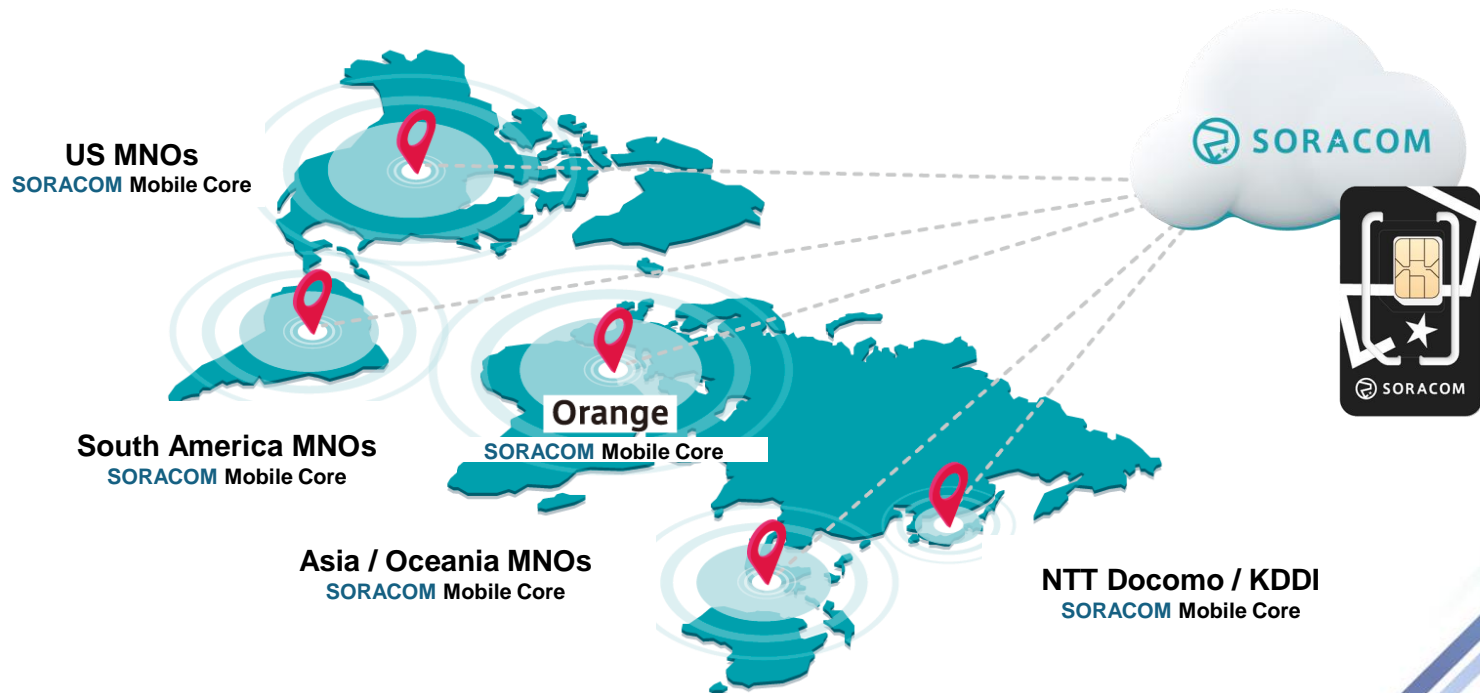
# Innovative Technology

Soracom enables its advantages by its proprietary  
“Mobile Core” technology running directly on public cloud



# Global Ready

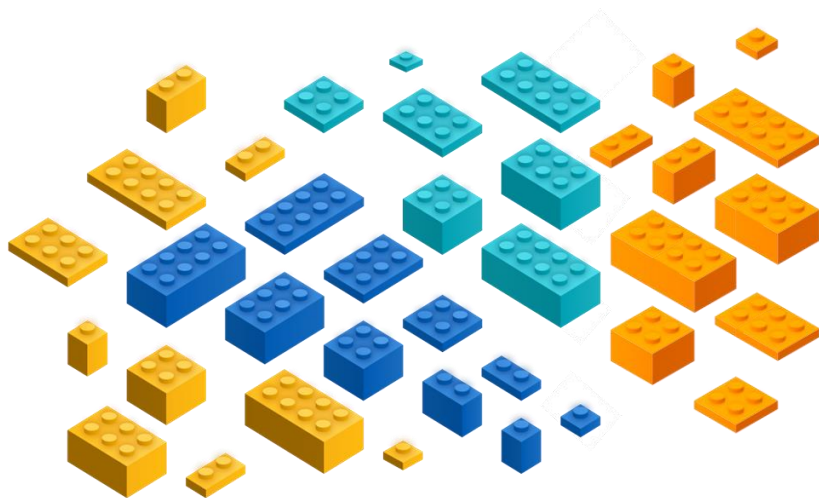
Seamless Multiple Access only with SORACOM  
< 428 Carriers / 185 Countries & Regions >





# Value of Platform - No need to Reinvent the Wheel -

Soracom provides fundamental  
+20 building blocks for IoT



Device

Connectivity

Cloud

Solution

Allowing customers  
to choose as needed



Customer A

## Smart Metering

- Cloud Integration
- Data formatting
- Connectivity

Using services



Customer B

## Payment Terminal

- Private Connectivity
- Security
- Global Connectivity

Using services



Customer C

## Vehicle Management

- Data Visualization
- Cloud Integration
- Connectivity

Using services



# Use Cases

Numerous customer cases across a wide range of industries



# 30,000+ customers World Wide Enterprise

**HITACHI**  
Inspire the Next

**ITOCHU**

**IHI**

**SUZUKI**

**THK**

**SHARP**

**SONY**

**OMRON**

信頼される安心を、社会へ。  
**SECOM**

**AGC**

**TOYOTA**  
connected

**YANMAR**

**KOMATSU**

**PHILIPS**

**SOURCENEXT**

**ONWARD**

**三菱重工**

**LIXIL**

**asics**

**Panasonic**

**DAIKIN**

**NICIGAS**  
ニチガス

**MITSUBISHI**  
ELECTRIC

**TEIJIN**  
帝人フロンティア株式会社

**住友ゴム工業株式会社**  
SUMITOMO RUBBER INDUSTRIES, LTD.

**大阪ガス**

**weathernews**

**ヤマト運輸**

**TEPCO**  
東京電力エナジーパートナー

**Beisia**

**新生銀行**

**TOABO**

**KITAGAS**

**Nikon**  
Trimble

**FUJITEC**

**日本交通株式会社**

**太平洋工業**

**clarion**  
Lifecycle Solutions

**ZOJIRUSHI**

**MIXI**

**CAN**  
東洋製罐株式会社

**中央電力**

Note: As of March 2024



# 30,000+ customers World Wide Global Deploy

**EXACT**

**IHI**

 **BUSPATROL**

**THK**

**citybee**

**AETHON**  
LABS

  
LINEVISION

**touchpoint** 

 **MITSUBISHI**  
**ELECTRIC**

 **nemo energy**

 **MATRIX**

**Sefam**

 **Sollatek**<sup>™</sup>

 **MITSUBISHI**  
**HEAVY INDUSTRIES**

 **UBIQUICOM**

 **enerbrain**<sup>®</sup>  
For an intelligent use of energy

 **HORTAU**

 **SUTRO**

**FUJITEC**

**nectar**

**Omniflow**<sup>®</sup>

  
**ERDA**

**opconnect**<sup>™</sup>  
A smarter, cleaner, greener future

 **Remote Care**  
**Partners**

 **BeeHero**

# 30,000+ customers World Wide SMB/StartUp

otta®

YourStand 

DESAMIS

LUUP

SUIMIN  
Sleep is the Ultimate Intelligent Mechanism in Nature

LOVOT

SMat

 自然電力

 pocketchange

MITSUFUJI

 hacomono

  
WHILL

 soundveil

 Photosynth

Charichari

LINKWIZ  
Robotics & Partners

 farmo

 Linough

 UniFa

 yobimori

 Pixie Dust Technologies, Inc.

umitron. 

 MOVO

  
HelloLight

 chikaku

Tomorrow, Together  
KDDI



# Internet of Things

The future that we have envisioned

A hand holding a globe with city lights, surrounded by digital icons and network lines.

When we say **IoT**, we think of a future

People, things, and events associated with them organically  
connect and interact with each other to achieve a better  
world, together

## What has become reality today

Devices can be securely connected to their respective cloud environments



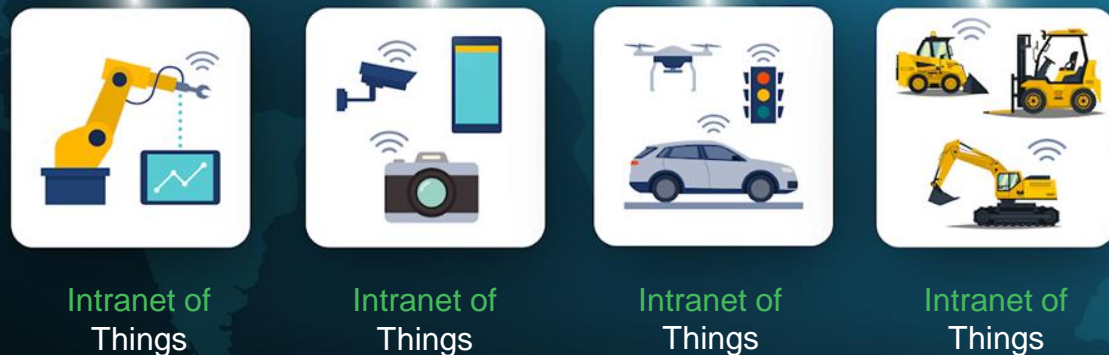


# What to aim next, together

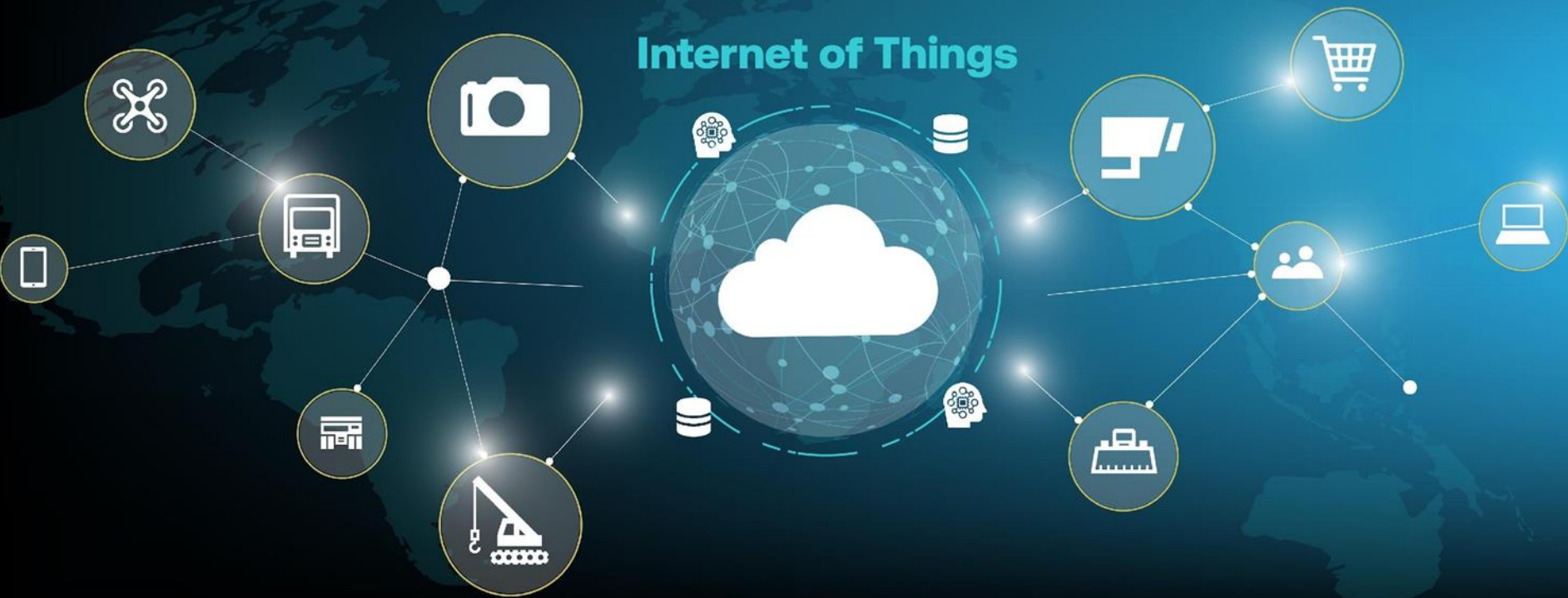
Data is shared beyond organizations and used for taking actions



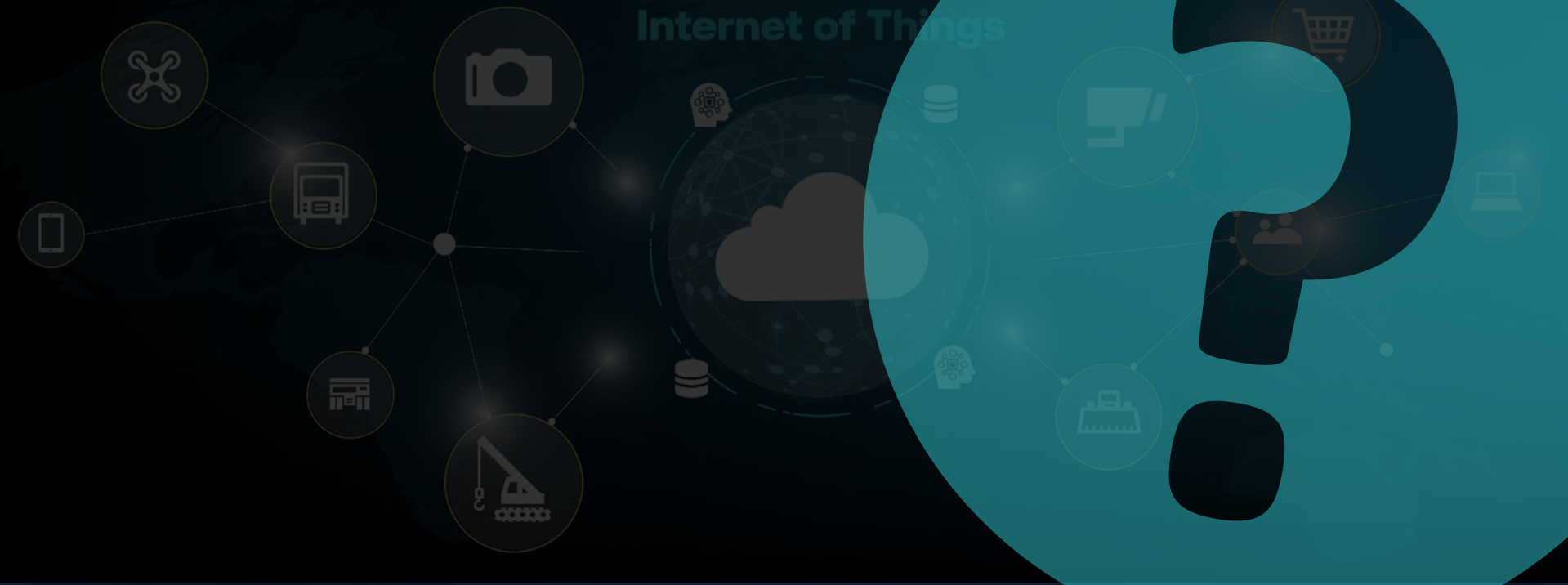
A true IoT vision where everything and everyone collaborates to make the world a better place



**Data is collected.**  
**Devices are there to actuate.**



**But, who will make decisions?**



# Case Study



Retail & Stores

## Beisia Co., Ltd

Capture fresh food shelves across multiple supermarket locations with “**SoraCam**”, analyze images using AI, and display stock levels in percentages to determine restocking timing.



Service used: Soracom Cloud Camera Services

Device used: ATOM Cam 2



# Case Study



Retail & Stores

## How it is used?

Beisia

- Food Shelf
- Products
- Stock
- Store Congestion status

[As Is] Decision is made by “Human”

[To Be] Decision is made by “Images x AI”



協力:株式会社AID様

With cloud-based cameras “SoraCam” and AI, decisions are made based on data, not intuition.



# Case Study



Retail & Stores

## Co-op Sapporo

Using “**SoraCam**” to record and analyze images of the prepared food sales floor at night by time of day.

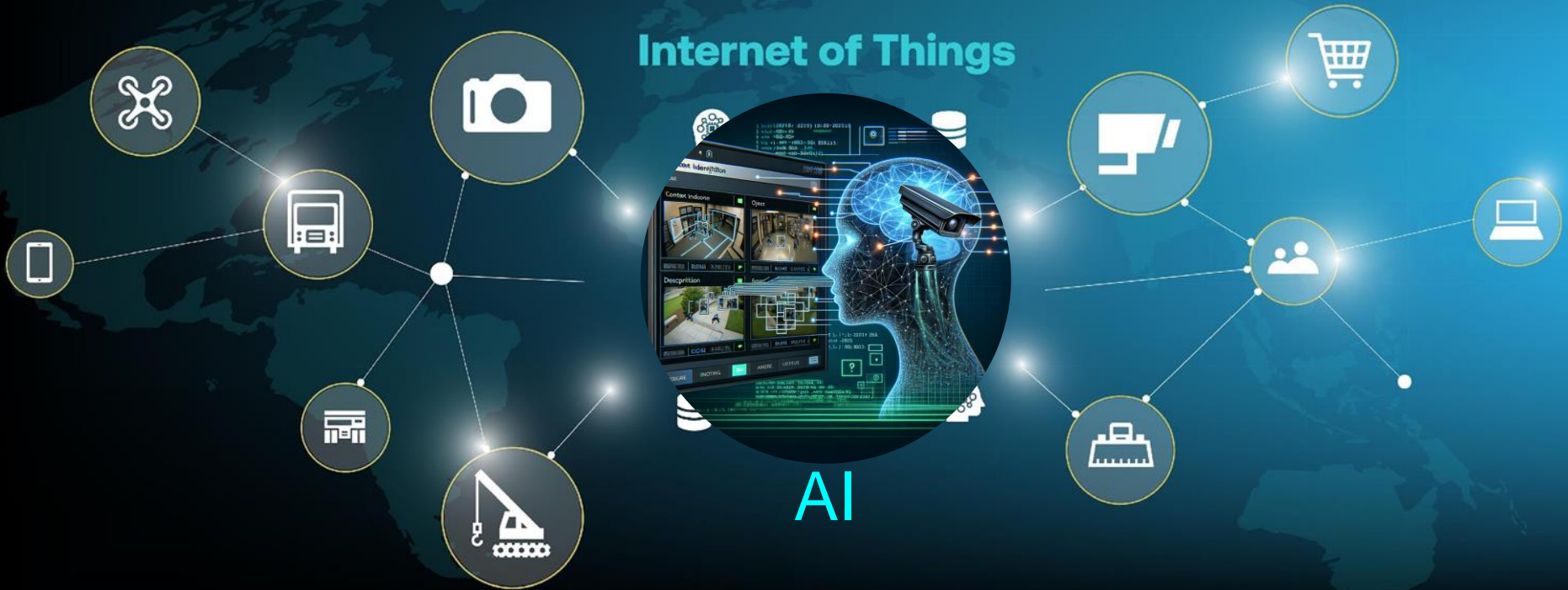
The amount of food on display and discounting methods were reviewed to reduce waste, increase sales, and improve profit margins.



Service used: Soracom Cloud Camera Services

Device used: ATOM Cam 2, ATOM Cam  
Swing

Seeing the rise of generative AI in 2023,  
we have believed we finally have an answer





Gen  
AI

IoT

Innovation

By adapting Generative AI in IoT,  
Customer innovation will accelerate to the next level

# IoT x GenAI Lab

Established IoT x GenAI Lab in Collaboration  
with Matsuo Research Institute

Established IoT × GenAI Lab



- Jointly established in 2023 with Matsuo Research Institute, Tokyo University
- Specializing in areas of Generative AI, including IoT and Large Language Models (LLM)
- Formed a team to develop new products, conduct research and development, and provide professional services to customers

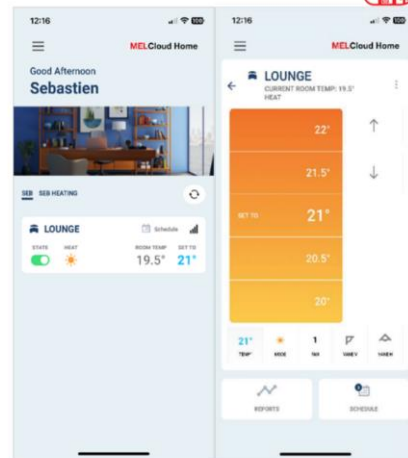
# Case Study



Energy

## Mitsubishi Electric Europe B.V. “MELCloud.”

SORACOM is used for a system to remotely optimize heating efficiency, etc. in Europe, where demand for energy conservation is rising. The system can be used in homes without a communication environment.

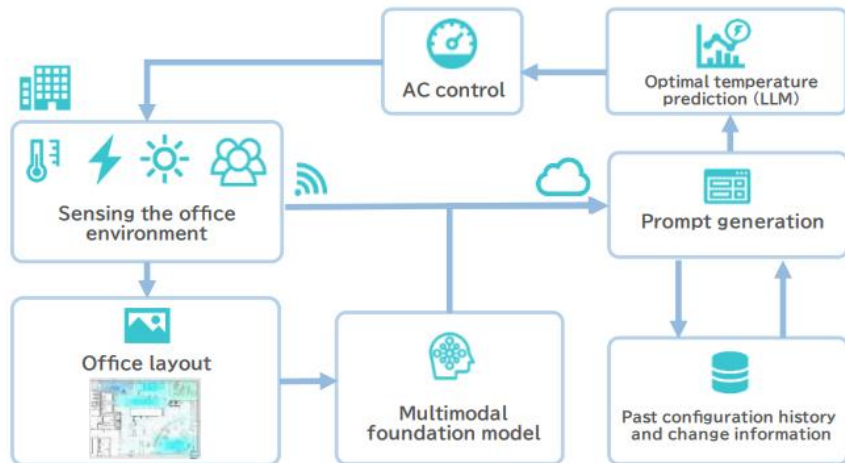


Service used: SORACOM Air



# PoC for HVAC Control Utilizing IoT and Gen AI

Optimize air conditioning settings, achieving an average 48% reduction in electricity consumption with IoT x GenAI



## Collected Data

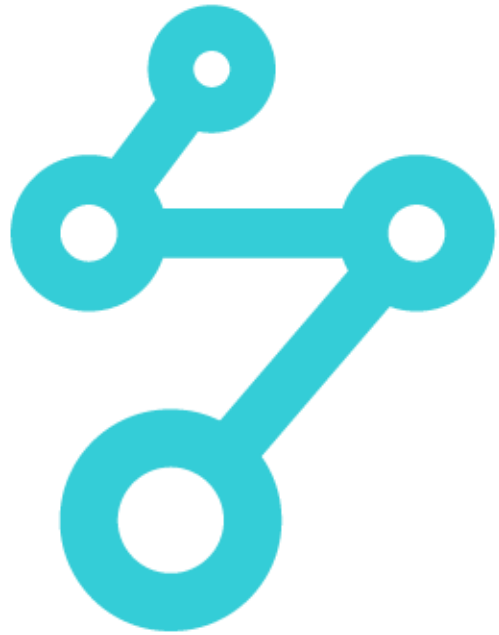
1. **Environmental data from sensors** : Measured every minute: indoor temperature and humidity
2. **Environmental data from external weather information** : (Outdoor temperature, humidity, and solar radiation)
3. **Air conditioning settings**
4. **Air conditioning utilization detection system data**
  - Images and indoor temperature heat maps
  - Number of office occupants
  - Occupant position and distribution information
5. **Sensory information**
  - Regular feedback from office occupants regarding comfort levels

Generative AI Engine and Data Visualization Tools Used

- OpenAI - GPT-4/4V (gpt-4-1106-preview/gpt-4-1106-vision-preview)

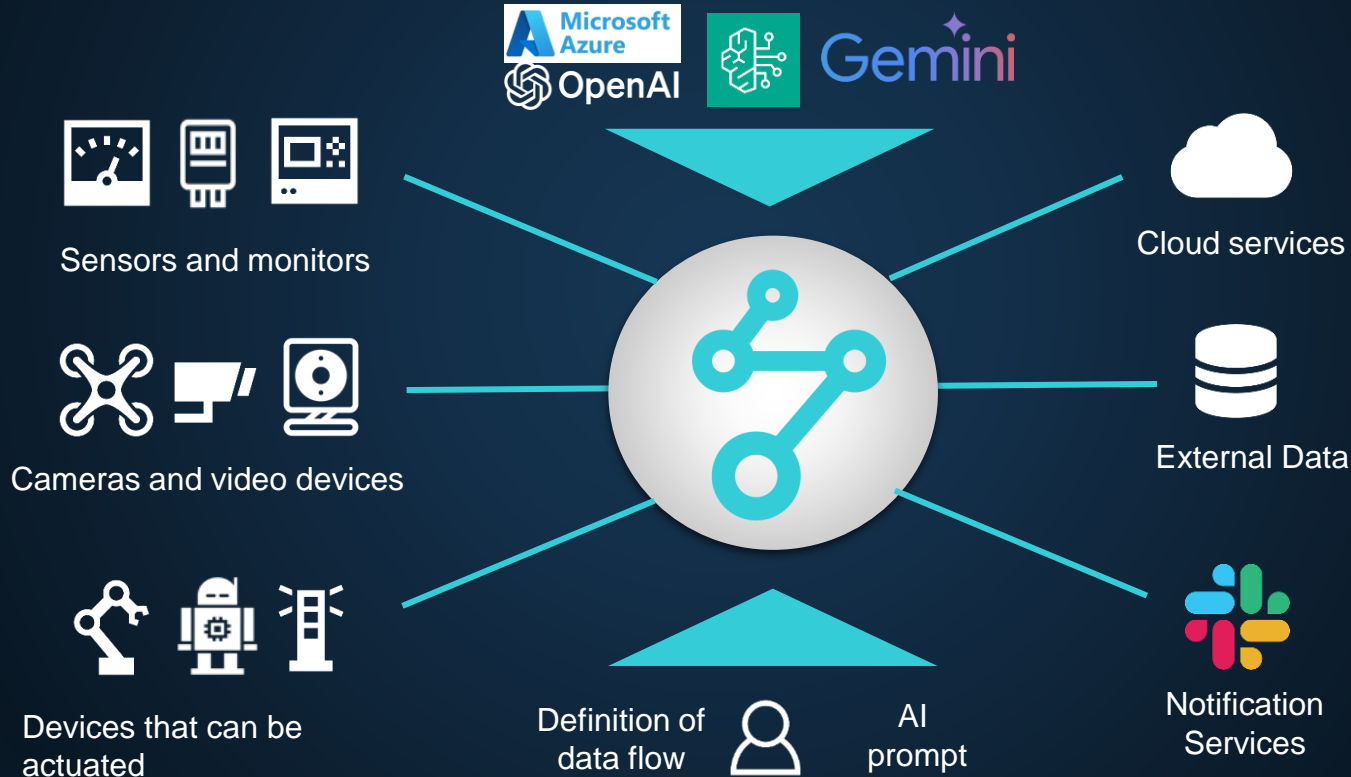
- Dataiku (ver.12.1) Dataiku was utilized through discussions with generative AI experts to efficiently visualize

**How could anyone build advanced IoT applications,  
combining device-generated data and domain expertise?**



**SORACOM Flux**

# SORACOM Flux: Build IoT Applications by defining data flows among Devices, AI and Cloud

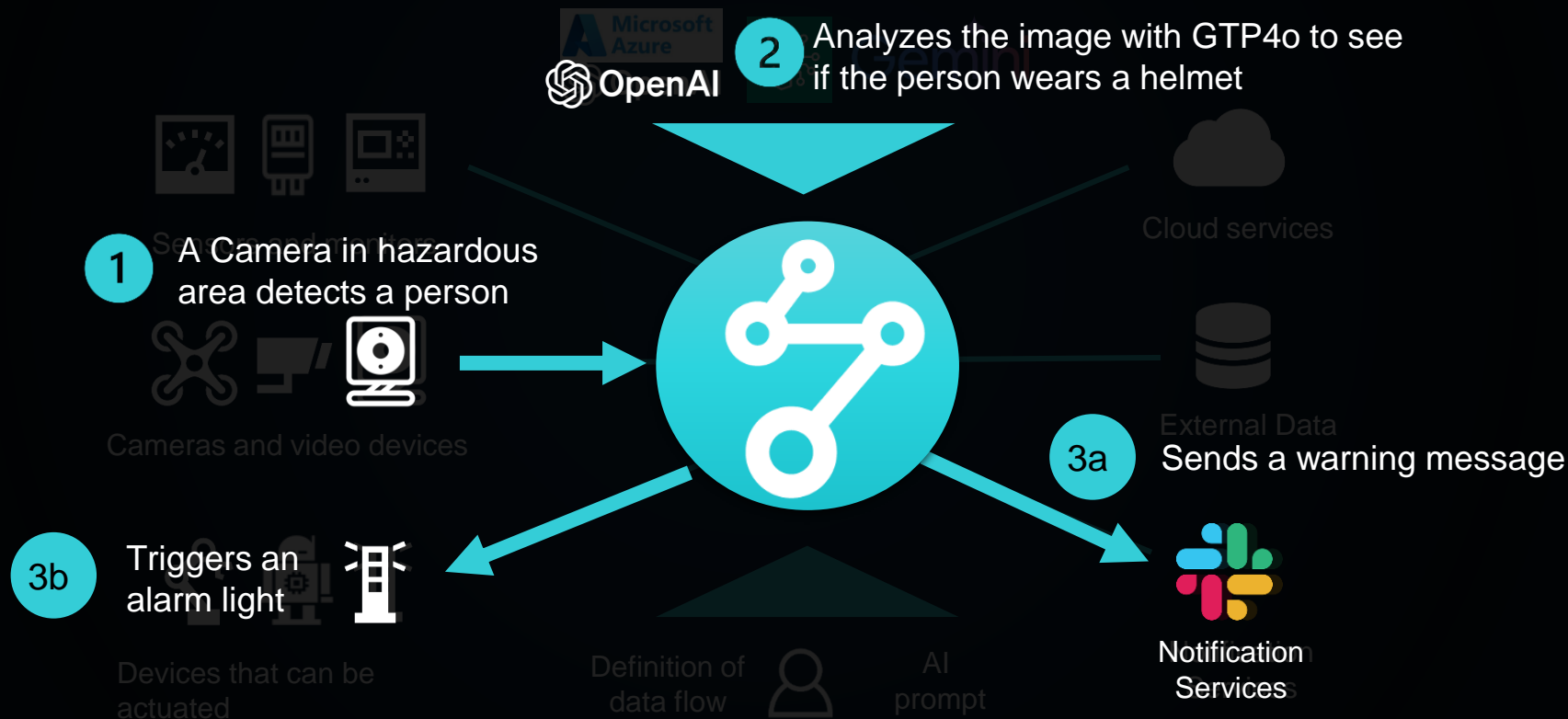


A group of warehouse workers in a large industrial setting. Several workers are wearing high-visibility vests and hard hats. Overlaid on the image are green and red rectangular frames with grid patterns, likely representing AR safety overlays or monitoring systems. One worker in the center is wearing a green vest and has a large green frame over him. Other workers have smaller frames over their heads or torsos. The background shows high industrial shelving filled with boxes and a forklift on the left.

Example: Monitoring protective  
equipment usage at warehouse



# SORACOM Flux: Build IoT Applications by defining data flows among Devices, AI and Cloud





## Flux Apps



### You don't have any Flux apps yet

By using the low-code IoT application builder "SORACOM Flux," you can build IoT applications that integrate generative AI by combining conditions and actions on sensor data sent from devices and images sent from cameras.

[Create a new Flux app](#)



Example: A new requirement added!  
Call when an emergency situation detected



## Warehouse monitoring

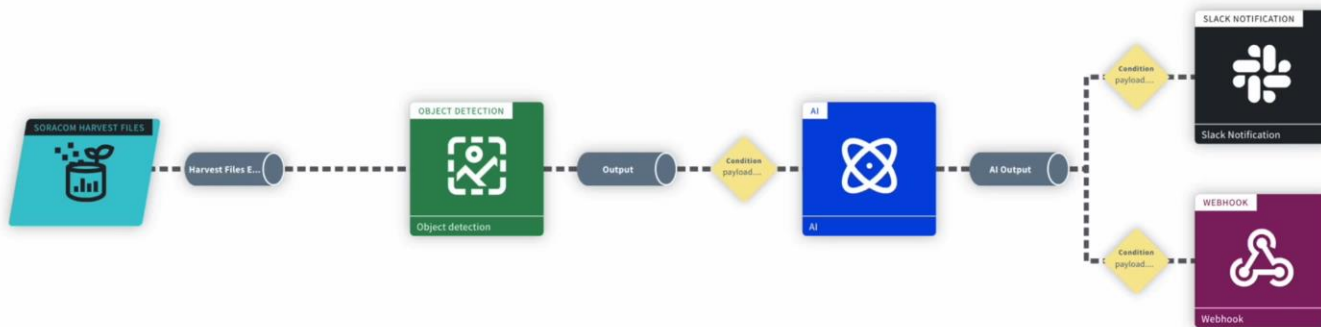
Detects warehouse break-ins and warns with a patrol light when a person is detected.



### STUDIO

+ Add an event channel

### HISTORY



+ - ↺



# SORACOM Flux

## Low-Code IoT Application Builder

- Apply rules to data sent from devices and images sent from cameras
- Combine multiple data sources and generative AI to analyze and make decisions
- Take actions based on the decisions, e.g. sending notifications and actuating IoT devices
- Achieve these without complex coding

